

Burton Joyce Players presents



# Dick Whittington

By Gill Bowness

**28th – 31st January 2015**

At Burton Joyce and Bulcote Village Hall

[www.burtonjoyceplayers.co.uk](http://www.burtonjoyceplayers.co.uk)



## Cast (In order of appearance)



Dick Whittington **Katy Woolley**  
 Bella Donna **Linda Burgin**  
 Blue Bell **Avril McCormick**  
 Ding Dong **Lisa Ostrowsky-Weston**  
 King Rat **Alistair Dobb**  
 Grunge **Chris Mercer**  
 Slimer **Adam Miller**  
 Kitty Galore **Jane Murray**  
 Alderman Fitzwarren **David Matthews**  
 Prunella **Lorraine Andrew**  
 Alice Fitzwarren **Zoë Sansom**  
 Dame Seraphina Scrubbit-Cleaner **Gavin Alston**  
 Winston **Tom Shepherd**  
 Churchill **Steve Armstrong**  
 Pearly King **Trevor Wright**  
 Pearly Queen **Kathy Matthews**  
 Captain Slog **Dan Miller**  
 Neptune **Patrick McDonough**  
 Chief Cookenbottlewasher **Molly Fitches**

## Chorus

### Adult Chorus

Tobias Blackmore-Smith  
 Sophie Dobb  
 Joan Dodds  
 Rachel Dodds  
 Anne Fritscher  
 Jo Impey  
 Euan Jones  
 Tom McHugh  
 Steph Pindor  
 Elaine Smith  
 Danielle Watson

### Junior Chorus

Lexi Brooks  
 Emma Hackett  
 Abbie Harrison-Evans  
 Emily Metcalfe  
 Mollie Ostrowsky-Weston  
 Hazel Titterton

Also featuring an appearance from  
**The Sally Ashworth Dancers**



## Creative Team



Director **Kathy Matthews**  
 Assistant Director **Elaine De Villiers**  
 Stage Manager **Roger Harwood**  
 Stage Crew **Mel Reynolds, Richard Hichens, John Burton, Steve Turner, Trevor Wright and Patrick McDonough**  
 Lighting / Effects **Ryan Holmes**  
 Sound / Effects **David Page, Ben Woolley and Colin Woolley**  
 Production **Kathy Matthews, Patrick McDonough, Roger Harwood, Ryan Holmes, Gavin Alston, Elaine De Villiers, David Page and Jenny Harwood**  
 Costumes **Jenny Harwood, Linda McDonough and Jean Hichens**  
 Dame's Costumes **Gavin Alston and Yvonne Wright**  
 Props **Patrick McDonough**  
 Set Construction **Roger Harwood, Mel Reynolds, Ryan Holmes and Patrick McDonough**  
 Scenery Artists **Sara Kyle, Sarah Dobb and Lynn Carr**  
 Graphic Design / Photography **Dan Miller**  
 Business Manager **Liz Breeze**  
 Front of House **Liz Breeze and Team**  
 Bar **Lynn Turner and Steve Turner**

## Act One

Scene One **Outside Burton Joyce**  
 Scene Two **Sewer**  
 Scene Three **London Street**  
 Scene Four **Back Alley**  
 Scene Five **Fitzwarren's Shop**  
 Scene Six **London Street**  
 Scene Seven **Outside Burton Joyce**

## Act Two

Scene One **On the Ship**  
 Scene Two **Under the Sea**  
 Scene Three **African Island**  
 Scene Four **The Song Sheet**  
 Scene Five **The Finale**

**WARNING: Strobe lights are used during this performance**

**There will be one interval of approximately 15 minutes**

**Please ensure that all mobile phones are switched off or set to Silent mode during the performance**

Posters and tickets printed by **Toot Hill Reprographics, Bingham**  
 Programmes printed by **The Print Quarter, West Bridgford**



**Katy Woolley**

~ Dick Whittington ~



**Gavin Alston**

Dame Seraphina  
~ Scrubbit-Cleaner ~



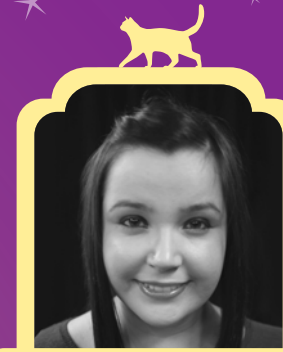
**Jane Murray**

~ Kitty Galore ~



**Alistair Dobb**

~ King Rat ~



**Zoë Sansom**

~ Alice ~



**Tom Shepherd**

~ Winston ~



**Steve Armstrong**

~ Churchill ~



**Chris Mercer**

~ Grunge ~



**Adam Miller**

~ Slimer ~



**David Matthews**

~ Alderman Fitzwarren ~



**Lorraine Andrew**

~ Prunella ~



**Linda Burgin**

~ Bella Donna ~



**Avril McCormick**

~ Blue Bell ~



**Lisa Ostrowsky-Weston**

~ Ding Dong ~



# Rehearsal

# Burton Joyce Players

We stage three productions each year; two plays and the ever popular village pantomime. We always need set designers, stage hands, scenery artists, sound technicians, lighting technicians, prop makers, front-of-house assistants and, of course, actors of all ages!

If you have an interest in any aspect of theatre, then you are more than welcome at the Burton Joyce Players. As a general guide, we rehearse on Monday and Wednesday evenings at the Village Hall from September through to April.

If you are interested in joining the Burton Joyce Players, contact Mel Reynolds, our secretary, on **0115 9871306** or email him at **secretary@burtonjoyceplayers.co.uk**.

## New Website

Our website has recently been redesigned and finally went live in January 2015. It contains lots of useful information such as performance dates, booking information, contact details, the history of the Players and an archive of every production that the Players have staged since the group was formed in 1927. Please visit our new website to keep up-to-date with productions and latest news. **www.burtonjoyceplayers.co.uk**

## Social Media

Follow the Burton Joyce Players on Facebook and Twitter for updates about our upcoming productions and social events.

 @BJPlayers

 Burton-Joyce-Players

Our next production is a cross-gendered version of  
**'The Importance of Being Earnest'**  
by **Oscar Wilde**

**30th April - 2nd May 2015**  
At Burton Joyce and Bulcote Village Hall

# Special Thanks

In recognition of allowing us the use of their premises, Burton Joyce Players would like to thank:

**The Wheatsheaf Inn** Church Street, Burton Joyce

**Nottinghamshire Hospice Charity Shop** Main Street, Burton Joyce

**The Co-operative** Main Street, Burton Joyce

**And thanks to everyone who happened to be in the Charity Shop and the Co-op on that day for not reporting us to the Police!**



For their continued support in acting as box office for our ticket sales, Burton Joyce Players would like to thank:

## The Paper Shop

**Opening hours:** Monday-Friday 7am-5pm | Saturday 7am-4pm | Sunday 7am-1pm

- Excellent delivery service 7 days a week
- Fresh vegetables and veggie boxes
- Fresh eggs – £1.00 per half dozen
- Fresh local milk – £1.49 for 2 litres, 89p for 1 litre

**24 Nottingham Road, Burton Joyce, Nottingham NG14 5AH | Telephone: 0115 931 2125**

